

CJH(BH) series current transformers

Corporate Culture

Vision:

To make our company to be one of the leading enterprises in the industry of our domestic master-control electrical appliances with low-voltage and the construction machinery lighting.

Our Mission:

To provide customers with the best quality, the shortest delivery period, the best cost-effective products and optimal service!

Values:

Customer-oriented, never forget the mission; Pragmatic innovation, win-win cooperation!



Company Profile



Jiangyin Changjiang was built in 1992, the first company who designed the low voltage signal lamp with LED technology, and it was been used and produced. At the same time, created the brand of “Changjiang Electric Appliance” and gradually build it into a famous brand in China.

After 30 years of trials and hardships, the company has developed into a leader in the lighting industry of electrical appliances and construction machinery. The main products include: signal lamp, button, transfer switch, current transformer and construction machinery lighting, etc., widely used in the electric power, construction machinery, industrial control, elevator, communication, rail transit, new energy and other industries. The company's products are novel in design and reliable in performance, which are widely recognized by downstream customers, including many well-known enterprises.

We adhere to be customer-oriented, rapidly response to our customers' non-standard customization needs, and strive to provide excellent solutions for customers; We adhere to the technical innovation as the support, and constantly expand our R&D team to focus on the product's development and upgrading; We insist on doing excellence in every detail, continuous optimization and improvement, and strive to provide superior quality and service for customers.

公司资质 ENTERPRISE QUALIFICATION

ENTERPRISE HONOR HONOR ARTICLES



CONTENTS

● CJH(BH)-0.66 series current transformer

CJH(BH)-0.66 current transformer introduction.....	1
CJH(BH)-0.66 current transformer selection guide.....	2
CJH(BH)-0.66-□ I type current transformer.....	5
CJH(BH)-0.66-□ II type current transformer.....	8
CJH(BH)-0.66-□ III type current transformer.....	13
CJH(BH)-0.66-□ J primary wire type current transformer.....	15
CJH(BH)-0.66-□ K open type current transformer.....	16
CJH(BH)-0.66-M□ studs type current transformer.....	18
CJH(BH)-0.66- measured type (S) current transformer.....	19
CJH(BH)-0.66- protective type (P) current transformer.....	23
Installation.....	25



Current transformer introduction

1. Current transformer conforms to the national standard GB20840.2-2014 and IEC61869-2:2012 "Current transformer";
2. "Rated current ratio" refers to the ratio of "rated primary current" to "rated secondary current";
Among them --
Rated primary current: the primary current value as the performance benchmark of the current transformer;
Rated secondary current: the secondary current value as the performance benchmark of the current transformer;
3. Accuracy level: For the given grade of the current transformer, the error of the transformer under the specified conditions of use should be within the specified limit;
4. Rated output: under the rated secondary current and rated load conditions, the apparent power value of the secondary circuit supplied by the transformer (expressed as "volt-ampere" or " Ω " under the specified power factor);
5. The number of turns through the core: when the transformer is in use, the number of turns around the cable in the transformer perforation;
6. For 0.2S, 0.5S special purpose current transformer, at 1%-120% rated current, equipped with the corresponding instrument (with the watt-hour meter), can make accurate measurement;
7. Protection current transformer: For protection current transformer, the accuracy level is nominal by the percentage of the maximum allowable compliance error of the transformer at the rated accuracy limit of a current current, followed by the letter "P" for protection, and the standard accuracy level of the protection current transformer is 5P and 10P. For example: 5P10, the "5" in front of "P" means that the compound error at the rated accurate limit current is not more than 5%, and the "10" after "P" means its accurate limit coefficient 10.

CJH(BH)-0.66 series current transformer selection guide

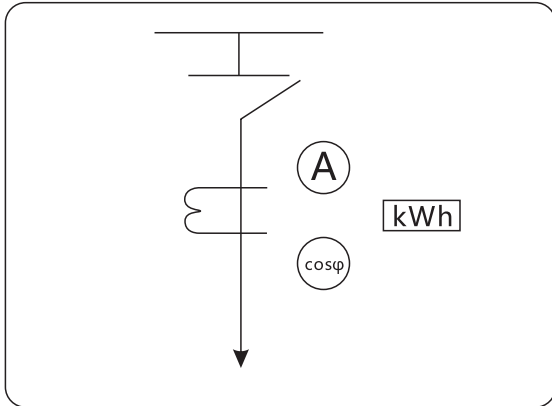
Model	Characteristic
CJH(BH)-I type	Compatible with horizontal square and round holes, can be threaded cable or single busbar, measurement, primary 15-3000A, secondary 5A or 1A.
CJH(BH)-II type	Horizontal square hole, can run through multiple cables or 1-2 busbars (some specifications can run through 2-6 busbars), measurement, first 75-10000A, second 5A or 1A (when the secondary current is 1A, the maximum primary current is 5000A).
CJH(BH)-III type	Vertical square hole, can run through multiple cables or 1-2 busbars (some specifications can run through 2-6 busbars), measurement, first 75-10000A, second 5A or 1A (when the secondary current is 1A, the maximum primary current is 5000A).
CJH(BH)-M type CJH(BH)-J type	Direct wire type, to avoid a small current when the cumbersome, measurement, primary 5-40A, secondary 5A or 1A.
CJH(BH)- measured	Core-through type, the accuracy is 0.2S, 0.5S, use to matching electricity meter, and measure electricity.
CJH(BH)- protective	Current transformer for protection, overcurrent protection, horizontal square type, accuracy level up to 5P5, 5P10, 5P15, 5P20

■ Selecting method

- According to the value of the measured current, when selecting the rated current, the measured value should be about 2/3 of the range, so that the current transformer can work in the range of 60% - 80% of the rated current.
- The sum of loop and load impedance should not exceed the rated load of the current transformer.
- When the distance between the instrument and the current transformer is far away or the circuit load is large, the current transformer with secondary 1A should be preferred.

When the transformer is in use and debugging, there is feedback information: "The ammeter indicates a large deviation from the actual current value", and then suspects that "there is a problem with the quality of the transformer". The reason is that the rated capacity of the design is small, and the total load impedance is greater than the rated capacity, which is not caused by the quality problem of the transformer.

For clarity, here is an example: a power distribution device, such as on-site or central two measurement and measurement, wire section 2.5mm², 80m apart, should be selected transformer rated capacity will be different (ignore contact resistance).



Capacity (VA)	Line length (m)		50	
	3	5	1	5
Survey wire	0.042	1.05	0.7	17.5
Ammeter	0.4	0.4	0.4	0.4
Power factor	0.5	0.5	0.5	0.5
Watt-hour meter	1.5	1.5	1.5	1.5
Load capacity	2.44	3.45	3.1	19.9
Transformer capacity	2.5	5	5	20

The data for trademark extracts are detailed in Tables 1 and 2 below

Power (VA)/resistance (Ω) of the measurement circuit

Table 1

Wire area (mm ²)	Secondary current (A)	Transmission distance (m)									
		1		2		5		8		10	
1.5	1	0.023	0.023	0.047	0.047	0.117	0.117	0.188	0.188	0.235	0.235
	5	0.59		1.17		2.93		4.69		5.86	
2.5	1	0.014	0.014	0.028	0.028	0.071	0.071	0.112	0.112	0.14	0.14
	5	0.35		0.7		1.76		2.82		3.52	
4	1	0.009	0.009	0.018	0.018	0.044	0.044	0.071	0.071	0.088	0.088
	5	0.22		0.44		1.10		1.76		2.2	
6	1	0.006	0.006	0.012	0.012	0.029	0.029	0.468	0.468	0.058	0.058
	5	0.15		0.29		0.73		1.17		1.47	
10	1	0.004	0.004	0.007	0.007	0.018	0.018	0.028	0.028	0.035	0.035
	5	0.09		0.18		0.44		0.7		0.88	

Transmission distance (m) of different rated capacity

Rated capacity (VA)	Current (A)	Wire area (mm ²)			
		1	1.5	2.5	4
2.5	1	71	106.5	178	284
	5	2.8	4.3	7.1	11.4
5	1	142	213	355	586
	5	5.7	8.5	14.2	22.7
10	1	284	426	710	1136
	5	11.4	17	28.4	45.5

Power consumption list of commonly used instruments

Table 2

Instrument name		Instrument model	Per current coil		
			Internal resistance (Ω)	Power(VA)	Number
Programmable digital display	Single-phase	PZ72、PZ80、PZ96、PZ96B、PZ16、PZ42、PZ46	<0.0015	<0.05	1
	Three-phase	PZ80、PZ96、PZ42			3
Digital power meter		PZ96、PZ16、PZ42、PZ46			1
Power factor meter					
Multifunctional electric instrument		ACR			3
Pointer ammeter	Rectifier	42L、6L、63L、45L		0.2-0.4	1
	Electromagnetic	1T1、63T		0.6-1.2	1
Pointer power ammeter	Rectifier	42L、6L、63L、45L		0.25-0.6	1
	Electric	1D5、63D		<6	3
Pointer power factor meter	Rectifier	42L、6L、63L、45L		0.4-0.8	1
	Electric	1D1		<6	
Watt hour meter	Single-phase	DD862		1-2	1
	Three-phase three wire	DD862、864、DX865、863		0.3-1	2
	Three-phase four wire	DT862、864、DX865		0.6-1	3

Ordering

1. When ordering, please specify the model, specification, rated current ratio, accuracy grade, and rated capacity of the transformer required.
2. Please specify the installation method when ordering (if not, provide according to the company's regulations - see the installation method in each specification and size table).
3. If you need to use under special conditions, please contact us for customization.

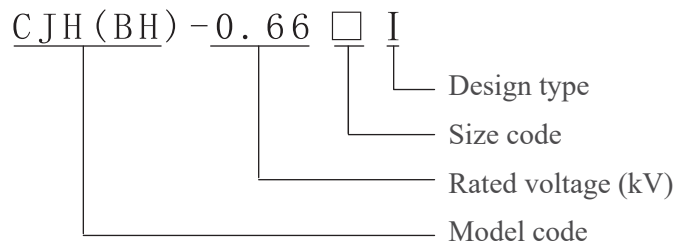
CJH(BH)-0.66 I type current transformer

Characteristic

Square and round mounting holes. It is mainly used for single, multi-cable crossing or single busbar crossing. It is matched with ammeter and used as electrical measurement indicator.



Model

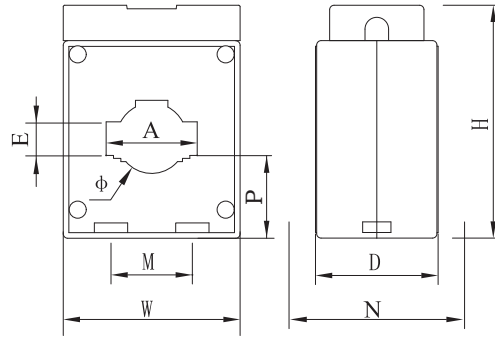


Specification

- Standard: GB/T 20840.2
 - Primary current: 15-3000A
 - Rated voltage: ≤AC 0.66kV
 - U_{imp}: 3000V 1min 50Hz
 - Altitude: ≤3000m
 - Environment: -30°C-+60°C, No rain and snow directly attack, no serious pollution and violent vibration places
 - Insulation class: E
- Secondary current: 5A, 1A
 Rated frequency: 50-60Hz

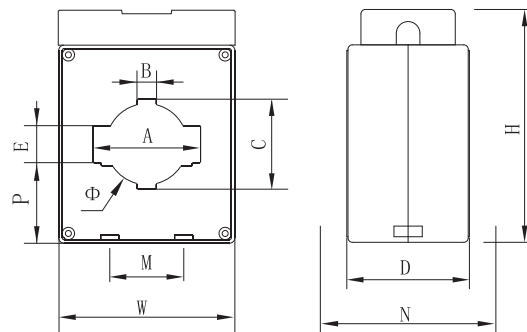
Ordering

- It is necessary to indicate the transformer model, specification, rated converter ratio, accuracy level and the corresponding secondary rated load or capacity;
- Generally, installation accessories are provided according to the multi-column installation method in the table. If other installation methods are required, please communicate and confirm before placing orders;
- If you need to use under special conditions, please contact us for customization.

Size


Unit (mm)

Model	Outline size				Hole size			Installation size		Installation method
	W	H	D	P	A	E	ϕ	M	N	
20 I	63	79	36	—	—	—	22	30	64	A
30 I	60	79	32	28	31	11	23	28	64	A
30I - I	60	79	41	28	31	11	23	28	64	A
40 I	75	98	45	35.7	41	11	31	42	64/58	A / D
50 I	83	98	41	33.2	51	16	36	50	64/58	A / D
60 I	100	128	45	45.7	61	21	46	42	64/58	A / D
80 I	117	148	44	60.2	81	12	50	60	64/58	A / D
100 I	145	152	44	62.7	102	11	62	80	64/58	A / D



Unit (mm)

Model	Outline size				Hole size					Installation size		Installation method
	W	H	D	P	A	E	Φ	B	C	M	N	
40 I - II	75	98	45	35.75	41	11	31	11	42	42	64/58	A / D
50 I - II	83	98	41	33.25	51	16	36	11	42	50	64/58	A / D
60 I - II	100	128	45	45.7	61	21	46	11	51	42	64/58	A / D

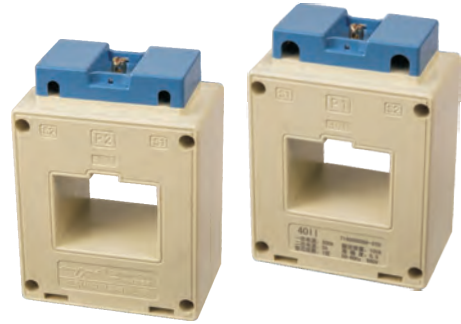
CJH (BH) -0.66 I type main technology specification																			
Model		20I		30I		30I-I		30I-G		40I/40I-II		50I/50I-II		60I/60I-II		80I		100I	
Specifacaton and number of busbar		Bus 70mm ²		30×10 1		30×10 1		30×10 1		40×10 1		50×10 1 40×10 1		60×10 1 60×6 2		80×10 1 60×10 2		100×10 1 80×10 1	
Accuracy class		0.5	1	0.5	1	0.5	1	0.5	1	0.5	1	0.2	0.5	0.2	0.5	0.2	0.5	0.2	0.5
Current ratio	Turns	Rated power (VA)																	
15/5	5		2.5		2.5	2.5	2.5			1.5		2.5							
20/5	4		2.5		2.5	2.5	2.5			1.5		2.5							
25/5	3		2.5		2.5	2.5	2.5			1.5		2.5							
30/5	3		2.5		2.5	2.5	2.5			1.5		2.5							
40/5	2		2.5		2.5	2.5	2.5			1.5		2.5							
50/5	2		2.5		2.5	2.5	2.5			1.5		2.5							
60/5	2		2.5		2.5	2.5	2.5			1.5		2.5							
75/5	1		2.5		2.5	2.5	2.5			1.5		2.5							
100/5	1	2.5	2.5		2.5	2.5	5			1.5	2.5	2.5							
150/5	1	2.5			2.5		5	2.5			2.5				2.5				
200/5	1	5			5		10	2.5			5				2.5				
250/5	1	5			5		10	2.5			5				2.5				
300/5	1	5			5		10	2.5			5				5			2.5	
400/5	1	5			5		10	5			5				5	2.5	5		5
500/5	1				10		10	10			10				10	2.5	10	2.5	10
600/5	1							10			10				10	2.5	10	2.5	10
750/5	1										10				10	2.5	10	2.5	10
800/5	1										10				10	2.5	10	2.5	10
1000/5	1												15						15
1200/5	1																20		20
1500/5	1																20		20
1600/5	1																20		20
2000/5	1																	40	40
2500/5	1																		40
3000/5	1																		40
		Rated load (Ω)																	
5/1	8		0.1		0.1		0.1												
10/1	4		0.1		0.1		0.1												
15/1	3		0.1		0.1		0.1												
20/1	2		0.1		0.1		0.1												
25/1	1		0.1		0.1		0.1												
30/1	1		0.1		0.1	0.1						0.1							
40/1	1		0.1		0.1	0.1				0.1		0.1							
50/1	1	0.2			0.2		0.2			0.1		0.2							
60/1	1	0.2			0.2		0.2			0.2		0.2							
75/1	1	0.2			0.2		0.2			0.2	0.2								
100/1	1	0.2			0.2		0.2			0.2		0.2							
150/1	1				2.5		2.5			0.2		2.5				2.5			
200/1	1				5		5			2.5		5			5		5		2.5
250/1	1				5		5			5		5			5		5		5
300/1	1				5		5			5		5			5		5		5
400/1	1				10		10			10		10			10		10		10
500/1	1									10		10			10		10		10
600/1	1									10		10			10		10		10
750/1	1									10		10			10		10		10
800/1	1									10		10			10		10		10
1000/1	1													10			10		10
1200/1	1															20		20	10
1500/1	1															20		20	20
1600/1	1															20		20	20
2000/1	1															20		20	20
2500/1	1																	20	20
3000/1	1																		20

Note: The small transformer can be customized by increasing the number of turns through the heart, such as CJH-0.66-40I/15/1-0.5 can be customized by 5 turns through the heart, and the capacity can be changed to the minimum ratio of 1 turn through the heart of the model.

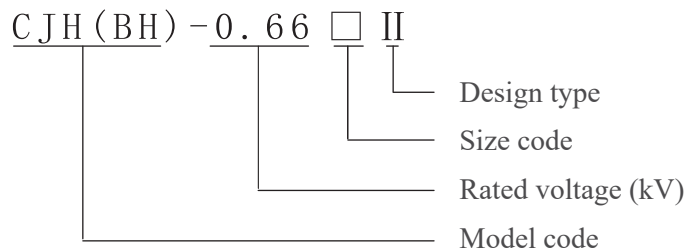
CJH(BH)-0.66 II type current transformer

Characteristic

Horizontal square mounting hole. Mainly suitable for multi-row (2-6) bus crossing, matching with ammeter, as electrical measurement indicator.



Model

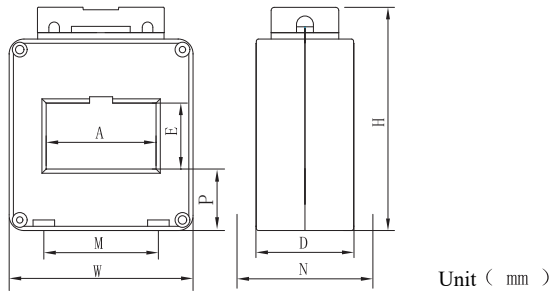


Specification

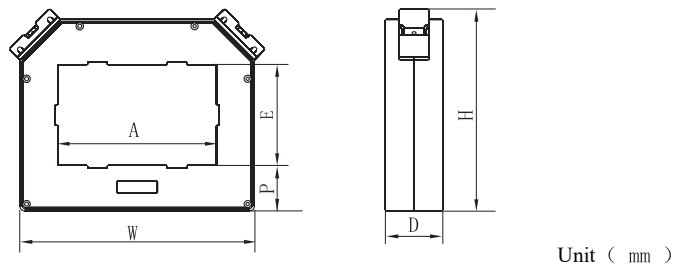
- Standard: GB/T 20840.2
- Primary current: 75-10000A
 Secondary current: 5A, 1A
- Rated voltage: \leq AC 0.66kV
- Rated frequency: 50-60Hz
- Uimp: 3000V 1min 50Hz
- Altitude: \leq 3000m
- Environment: -30°C-+60°C, No rain and snow directly attack, no serious pollution and violent vibration places
- Insulation class: E

Ordering

- It is necessary to indicate the transformer model, specification, rated converter ratio, accuracy level and the corresponding secondary rated load or capacity;
- Generally, installation accessories are provided according to the multi-column installation method in the table. If other installation methods are required, please communicate and confirm before placing orders;
- If you need to use under special conditions, please contact us for customization.

Size


Model	Outline size				Hole size		Installation size		Installation method
	W	H	D	P	A	E	M	N	
20 II	50	107	41	31.5	21	32	18	64/58	A / D
30 II	60	97	46	26.5	32	32	28	64/58	A / D
40 II	76	103	46	27.7	42	32	45	64/58	A / D
50 II	87	106	46	29.2	52	32	55	64/58	A / D
60 II	98	111	46	31.7	62	32	42	64/58	A / D
65 II	100	112	46	32.2	65	32	42	64/58	A / D
80 II	119	118	45	35.2	81	32	60	58/58	D / F
100 II	141	123	50	37.95	102	31	75	58/58	D / F
140 II	187	128	50	38.2	142	36	54	58/58	D / F
180 II	230	115	48	32.7	183	34	102	58/58	D / F
50×50II	89	137	45	34.2	53	53	57	58/58	D / F
60×50II	102	146	47	39.2	62	52	50	58/58	D / F
80×50II	119	149	45	40.7	82	52	60	58/58	D / F
100×50II	141	149	50	39.7	102	54	81	58/58	D / F
120×50II	168	154	48	43.2	122	52	54	58	P
125×50II	177	173	59	47.7	128	62	80	73	P
200×50II	246	173	55	48.2	206	61	188	73	P
220×50II	270	165	55	48.2	227	53	171	73	P
80×80II	120	170	52	37.2	83	80	75	73	P
100×80II	148	189	48	44.2	102	85	78	58/58	D / F
125×90II	172	187	52	38.7	128	94	137	73	P
170×100II	245	210	60	44.7	172	105	140	73	P
150×130II	200	245	50	48.5	151	133	120	73	P



Model	Outline size				Hole size		Installation method
	W	H	D	P	A	E	
165×100II	245	210	60	47.5	165	105	D / E

CJH (BH) -0.66 II type main technology specification																
Model	20II		30II		40II		50II		50×50II		60II		65II		60×50II	
Specification and number of busbar	20×10		30×10		40×10		50×10		50×10		60×10		65×10		60×10	
	1-2		1-2		1-2		1-2		1-2		1-2		1-2		2-3	
Accuracy class	0.5	1	0.5	1	0.2	0.5	0.2	0.5	0.2	0.5	0.2	0.5	0.2	0.5	0.2	0.5
Current ratio	Rated power (VA)															
75/5 (2)		2.5		2.5		2.5										
100/5		2.5		2.5												
150/5	2.5		2.5		2.5	5	2.5	2.5	2.5	2.5	2.5	2.5	2.5	2.5		
200/5	2.5		2.5		2.5	5	2.5	2.5	2.5	2.5	2.5	2.5	2.5	2.5		
250/5	5		5		2.5	5	2.5	2.5	2.5	2.5	2.5	2.5	2.5	2.5		
300/5	5		5		2.5	5	2.5	5	2.5	5	2.5	5	2.5	5	2.5	5
400/5	5		5		2.5	5	2.5	5	2.5	5	2.5	5	2.5	5	2.5	5
500/5			10		2.5	10	2.5	10	2.5	10	2.5	10	2.5	10	2.5	10
600/5			10		2.5	10	2.5	10	2.5	10	2.5	10	2.5	10	2.5	10
750/5					2.5	10	2.5	10	2.5	10	2.5	10	2.5	10	2.5	10
800/5					2.5	10	2.5	10	2.5	10	2.5	10	2.5	10	2.5	10
1000/5					15		15		15		15		15		15	
1200/5							20		20		20		20		20	
1500/5							20		20		20		20		20	
2000/5									40		40		40		40	
2500/5															40	
	Rated load (Ω)															
50/1					0.2											
60/1					0.2											
75/1					0.2		0.2									
100/1	0.2		0.2		0.2		0.2				0.2		0.2			
150/1	2.5		2.5		2.5		2.5				2.5		2.5			
200/1	2.5		5		5		5		2.5		5		5			
250/1	5		5		2.5	5	2.5		2.5		5		5			
300/1	5		5		2.5	5	2.5		5		5		5		5	5
400/1			10		2.5	10	2.5		10		10		10		10	10
500/1			10		2.5	10	2.5		10		10		10		10	10
600/1					2.5	10	2.5		10		10		10		10	10
750/1					2.5	10	2.5		10		10		10		10	10
800/1					2.5	10	2.5		10		10		10		10	10
1000/1					10	10	10		10		10		10		10	10
1200/1							20		20		20		20		20	
1500/1							20		20		20		20		20	
2000/1											20		20		20	
2500/1															20	
3000/1																

Note 1: can produce 40II 100/5 cl, 1, 40II 100/5 cl, 0.5 2turns.
 Note 2: 2 turns need to be customized.

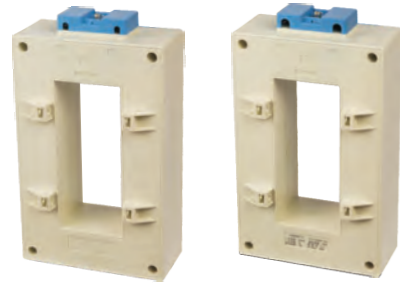
Model	80II		80×50II		80×80II		100II		100×50II		100×80II		120×50II		125×50II	
Specification and number of busbar	80×10		80×10		80×10		100×10		100×10		100×10		120×10/1-3		125×10/1-3	
	1-2		2-3		2-3		1-2		2-3		2-4		60×10/2-6		60×10/2-6	
Accuracy class	0.2	0.5	0.2	0.5	0.2	0.5	0.2	0.5	0.2	0.5	0.2	0.5	0.2	0.5	0.2	0.5
Current ratio	Rated power (VA)															
75/5																
100/5																
150/5																
200/5																
250/5																
300/5		5														
400/5		5		5		5		5								
500/5		10	2.5	5	2.5	10		10		10		10				
600/5		10	2.5	10	2.5	10		10		10		10		10		10
750/5		10	2.5	10	2.5	10		10		10		10		10		10
800/5		10	2.5	10	2.5	10		10		10		10		10		10
1000/5	15		15		15		15		10		10		10		10	
1200/5	20		15		20		20		15		15		15		15	
1500/5	20		20		20		20		20		20		20		20	
2000/5	40		40		40		40		40		40		40		40	
2500/5	40		40		40		40		40		40		40		40	
3000/5	40		40		40		40		40		40		40		40	
4000/5					40		40		40		40		40		40	
5000/5											40		40		40	
6000/5																
	Rated load (Ω)															
50/1																
60/1																
75/1																
100/1																
150/1																
200/1																
250/1																
300/1		5		5		5										
400/1		10		10		10		10		10		10				
500/1		10		10		10		10		10		10		10		10
600/1		10		10		10		10		10		10		10		10
750/1		10		10		10		10		10		10		10		10
800/1		10		10		10		10		10		10		10		10
1000/1		10		10		10		10		10		10		10		10
1200/1	20		20		20		20		20		20		20		20	
1500/1	20		20		20		20		20		20		20		20	
2000/1	20		20		20		20		20		20		20		20	
2500/1			20		20		20		20		20		20		20	
3000/1			20		20		20		20		20		20		20	
4000/1											20		20		20	
5000/1																

Model	125×90II		140II	150×130II	180II	200×50II	220×50II	170×100II
Specifacaton and number of busbar	125×10/1-3		140×10/1-2	150×10	180×10	200×10/1-3	220×10	170×10
	60×10/2-6		70×10/2-4	2-6	1-2	100×10/2-6	2-3	2-4
Accuracy class	0.2	0.5	0.2	0.2	0.2	0.2	0.2	0.2
Current ratio	Rated power (VA)							
150/5								
200/5								
250/5								
300/5								
400/5								
500/5								
600/5								
750/5								
800/5								
1000/5	10		15	15	15	15	15	15
1200/5	20		20	20	20	20	20	20
1500/5	20		20	20	20	20	20	20
2000/5	40		40	40	40	40	40	40
2500/5	40		40	40	40	40	40	40
3000/5	40		40	40	40	40	40	40
4000/5	40		40	40	40	40	40	40
5000/5	40		40	40	40	40	40	40
6000/5	40			40		40	40	40
8000/5				40			40	40
10000/5							40	40
	Rated load (Ω)							
50/1								
60/1								
75/1								
100/1								
150/1								
200/1								
250/1								
300/1								
400/1								
500/1								
600/1								
750/1								
800/1								
1000/1								
1200/1	20		20					
1500/1	20		20	20	20	20	20	20
2000/1	20		20	20	20	20	20	20
2500/1	20		20	20	20	20	20	20
3000/1	20		20	20	20	20	20	20
4000/1	20		20	20	20	20	20	20
5000/1				20		20	20	20

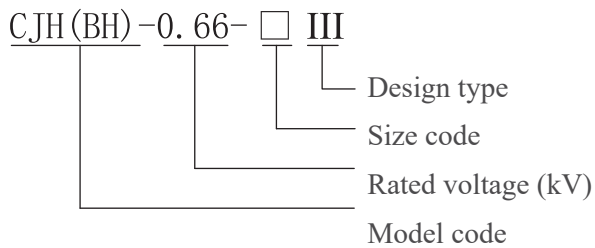
CJH(BH)-0.66 III type current transformer

Characteristic

Vertical square mounting hole. It is mainly suitable for the busbar (1-3). The product is improved on the basis of type I and II, with larger capacity and higher accuracy. It should be used as power supply system metering (cl, 0.2) and large impedance relay protection.



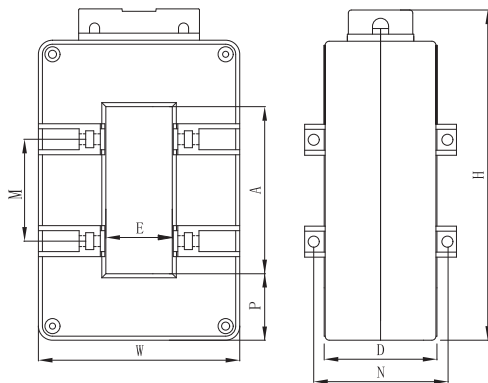
Model



Specification

- Standard: GB/T 20840.2
- Primary current: 150-5000A
Secondary current: 5A, 1A
- Rated voltage: ≤AC 0.66kV
- Rated frequency: 50-60Hz
- Uimp: 3000V 1min 50Hz
- Altitude: ≤3000m
- Environment: -30°C~+60°C, No rain and snow directly attack, no serious pollution and violent vibration places
- Insulation class: E

Size



Unit (mm)

Model	Outline size				Hole size		Installation size	
	W	H	D	P	A	E	M	N
60III	100	141	56	31.7	62	33	Two-hole	65.4
80III	100	165	56	33	83	33	60 Three-hole	66.5
80×50III	128	164	55	33	83	60	60 Three-hole	64.5
100III	105	190	56	35.7	103	33	65 Four-hole	65.4
120×50III	125	216	56	38.7	123	53	78 Four-hole	65.4
130×50III	130	221	56	36.7	132	57	80 Four-hole	65.4

Ordering

- It is necessary to indicate the transformer model, specification, rated converter ratio, accuracy level and the corresponding secondary rated load or capacity;
- If you need to use under special conditions, please contact us for customization.

CJH (BH) -0.66 III type main technology specification											
Model	60III		80III		80×50III		100III		120×50III		130×50III
Specification and number of busbar	60×10		80×10		80×10		100×10		120×10/1-3		130×10/1-3
	1-2		1-2		1-2		1-2		60×10/2-6		65×10/2-6
Accuracy class	0.2	0.5	0.2	0.5	0.2	0.5	0.2	0.5	0.2	0.5	0.2
Current ratio	Rated power (VA)										
150/5											
200/5											
250/5											
300/5		5									
400/5		5		5		5		5			
500/5		10		10		10		10			
600/5		10		10		10		10		10	
750/5		10		10		10		10		10	
800/5		10		10		10		10		10	
1000/5	15		15		10		15		15		15
1200/5	20		20		20		20		20		20
1500/5	20		20		20		20		20		20
2000/5	40		40		40		40		40		40
2500/5			40		40		40		40		40
3000/5					40		40		40		40
4000/5							40		40		40
5000/5									40		40
	Rated load (Ω)										
50/1											
60/1											
75/1											
100/1											
150/1											
200/1											
250/1		5									
300/1		5		5		5					
400/1		10		10		10					
500/1		10		10		10		10		10	
600/1		10		10		10		10		10	
750/1		10		10		10		10		10	
800/1		10		10		10		10		10	
1000/1		10		10		10		10		10	
1200/1	20		20		20		20		20		20
1500/1	20		20		20		20		20		20
2000/1	20		20		20		20		20		20
2500/1							20		20		20
3000/1							20		20		20
4000/1							20		20		20
5000/1											20

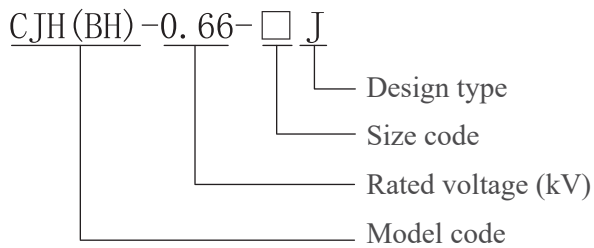
CJH(BH)-0.66 primary wire (J type) current transformer

Characteristic

The primary connection and the secondary connection are directly connected by screws, which can avoid the fussiness of turning when the current ratio is small.



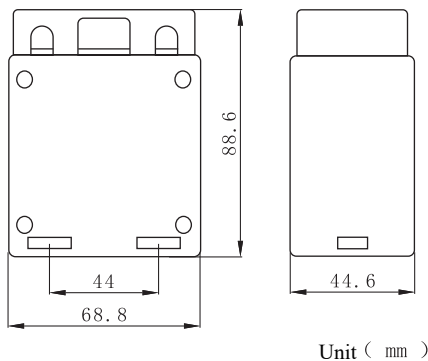
Model



Specification

- Standard: GB/T 20840.2
- Primary current: 5-40A
Secondary current: 5A, 1A
- Rated voltage: \leq AC 0.66kV
Rated frequency: 50-60Hz
- Uimp: 3000V 1min 50Hz
- Altitude: \leq 3000m
- Environment: -30°C~+60°C, No rain and snow directly attack, no serious pollution and violent vibration places
- Insulation class: E

Size



Ordering

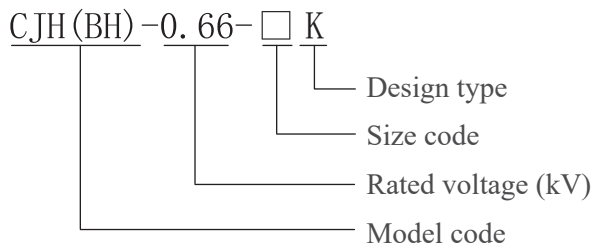
- Please note model, specification, current ratio, accuracy and secondary rated load or capacity, etc.;
- Please note installation method;
- If you need to use under special conditions, please contact us for customization.

CJH(BH)-0.66 J type main technology specification			
Model		30J	
Accuracy class		0.5	1
Current ratio	Turns	(VA)	
5/5	Direct connection type	2.5	2.5
10/5		2.5	2.5
15/5		2.5	2.5
20/5		2.5	2.5
25/5		2.5	2.5
30/5		2.5	2.5
40/5		2.5	2.5
		(Ω)	
5/1	Direct connection type	0.4	0.4
10/1		0.4	0.4
15/1		0.4	0.4
20/1		0.4	0.4
25/1		0.4	0.4
30/1		0.4	0.4
40/1		0.4	0.4

CJH(BH)-0.66 open (K type) current transformer

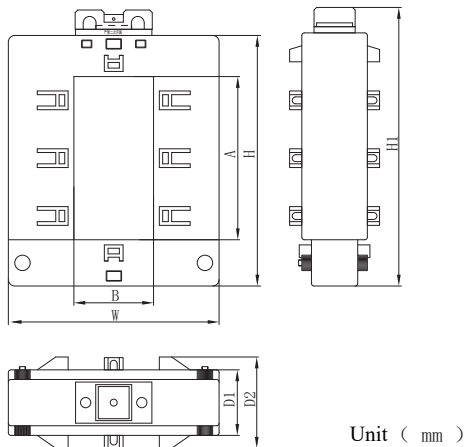
Characteristic

The open type current transformer is mainly used in the transformation project of distribution system. It is convenient to install and need not remove the bus once. It can also be operated live, which does not affect the normal power consumption of customers, saving manpower, material resources and financial resources for the transformation project of users and improving efficiency. This series of current transformer can be used with relay protection, measurement and metering devices.



- Standard: GB/T 20840.2
- Primary current: 100-5000A
Secondary current: 5A, 1A
- Rated voltage: \leq AC 0.66kV
- Rated frequency: 50-60Hz
- Uimp: 3000V 1min 50Hz
- Altitude: \leq 3000m
- Environment: -30°C-+60°C, No rain and snow directly attack, no serious pollution and violent vibration places
- Insulation class: E

Size



Model	Outline size					Hole size		No. of plate
	H	H1	W	D1	D2	A	B	
30×20K	92	112	91	40	59	32	22	4
60×40K	121	141	113	36	55	62	42	8
80×50K	143	163	123	40	59	82	52	8
80×80K	141	161	144	36	55	82	82	12
100×50K	170	190	142	48	67	102	52	8
120×80K	185	205	152	40	60	122	82	16
125×60K	195	215	164	51	71	127	62	16
140×60K	210	230	164	51	71	142	62	16
160×80K	237	257	183	52	71	162	82	16
200×80K	280	300	183	52	71	206	82	16

Ordering

- Please note model, specification, current ratio, accuracy and secondary rated load or capacity, etc.;
- Installation method is plate fixed;
- If you need to use under special conditions, please contact us for customization.

CJH (BH)-0.66 open (K type) main technology specification														
Model		30×20K			60×40K		80×50K	80×80K	100×50K	120×80K	125×60K	140×60K	160×80K	200×80K
Hole size mm		32×22			62×42		82×52	82×82	102×52	122×82	127×62	142×62	162×82	206×82
Accuracy class		0.5	1	3	0.5	1	0.5	0.5	0.5	0.5	0.5	0.5	0.5	0.5
Current ratio	Turns	Rated capacity (VA)												
		100/5	1			1.5								
150/5	1			1.5										
200/5	1		1.5											
250/5	1	1.5				1.5								
300/5	1	1.5				1.5								
400/5	1	1.5			1.5		1.5	1.5						
500/5	1				2.5		1.5	1.5						
600/5	1				2.5		2.5	2.5						
750/5	1				2.5		2.5	2.5						
800/5	1				2.5		2.5	2.5	2.5	2.5	2.5	2.5		
1000/5	1				5		5		5	5	5	5		
1200/5	1				5		5		5	10	5	5		
1500/5	1				10		10		10	10	10	10		
2000/5	1						10		10	10	10	10	10	10
2500/5	1								10	10	10	10	10	10
3000/5	1								10	10	10	10	10	10
4000/5	1								10	10	10	10	10	10
5000/5	1										20	10	10	10
		Rated load (Ω)												
100/1	1			1.5										
150/1	1			1.5										
200/1	1		1.5											
250/1	1	1.5				1.5								
300/1	1	1.5				1.5								
400/1	1	1.5			1.5		1.5	1.5						
500/1	1				2.5		1.5	1.5						
600/1	1				2.5		2.5	2.5						
750/1	1				2.5		2.5	2.5						
800/1	1				2.5		2.5	2.5	2.5	2.5	2.5	2.5		
1000/1	1				5		5		5	5	5	5		
1200/1	1				5		5		5	10	5	5		
1500/1	1				10		10		10	10	10	10		
2000/1	1						10		10	10	10	10	10	10
2500/1	1								10	10	10	10	10	10
3000/1	1								10	10	10	10	10	10
4000/1	1								10	10	10	10	10	10
5000/1	1										20	10	10	10

Note: If you need to customize the product with higher accuracy grade, capacity or other technical parameters, please contact us for customization.

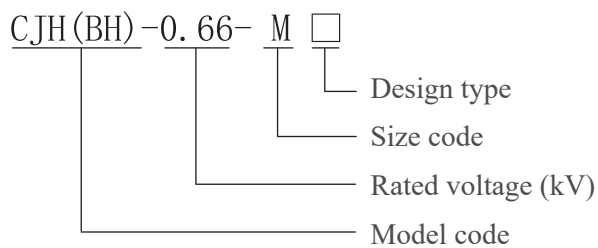
CJH(BH)-0.66 studs (M type) current transformer

Characteristic

It is suitable for small current and small space, easy installation: it can be installed directly by the bus, and can also be installed by the bottom plate configured by the company.

The primary connection and the secondary connection are directly connected by screws, which can avoid the fuss of turning when the current ratio is small.

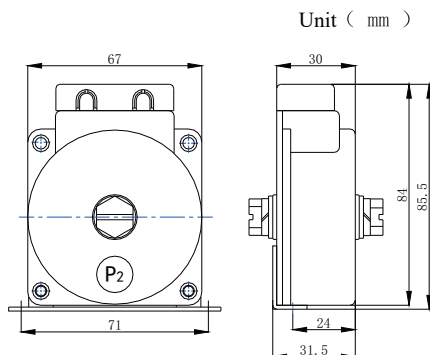
Model



Specification

- Standard: GB/T 20840.2
- Primary current: 5-40A
Secondary current: 5A, 1A
- Rated voltage: ≤AC 0.66kV
- Rated frequency: 50-60Hz
- Uimp: 3000V 1min 50Hz
- Altitude: ≤3000m
- Environment: -30°C-+60°C, No rain and snow directly attack, no serious pollution and violent vibration places
- Insulation class: E

Size



Ordering

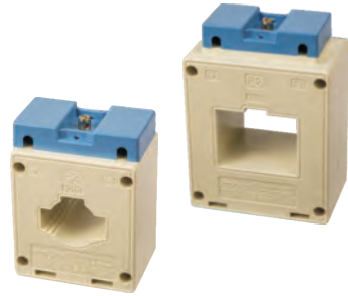
- Please note model, specification, current ratio, accuracy and secondary rated load or capacity, etc.;
- Please note installation method;
- If you need to use under special conditions, please contact us for customization.

CJH(BH)-0.66 M8 type main technology specification			
Model		M8	
Accuracy class		0.5	1
Current ratio	Turns	Rated capacity (VA)	
5/5	Direct connection type	2.5	2.5
10/5		2.5	2.5
15/5		2.5	2.5
20/5		2.5	2.5
25/5		2.5	2.5
30/5		2.5	2.5
40/5		2.5	2.5
50/5		2.5	2.5
60/5		2.5	2.5
75/5			
(Ω)			
5/1	Direct connection type	0.4	0.4
10/1		0.4	0.4
15/1		0.4	0.4
20/1		0.4	0.4
25/1		0.4	0.4
30/1		0.4	0.4
40/1		0.4	0.4
50/1		0.4	0.4
60/1		0.4	0.4
75/1			

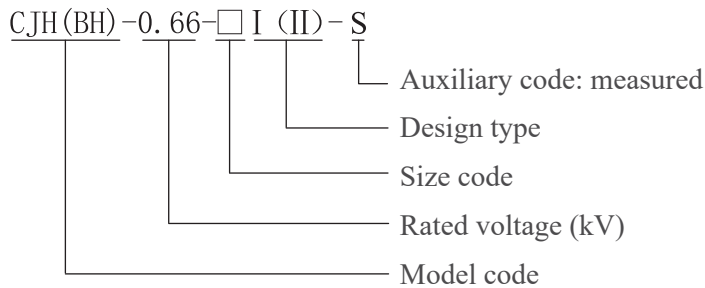
CJH(BH)-0.66 measured (S type) current transformer

Characteristic

Square and round mounting holes. It is mainly used for single, multi-cable crossing or single busbar crossing. It is matched with ammeter and used as electrical measurement indicator.



Model

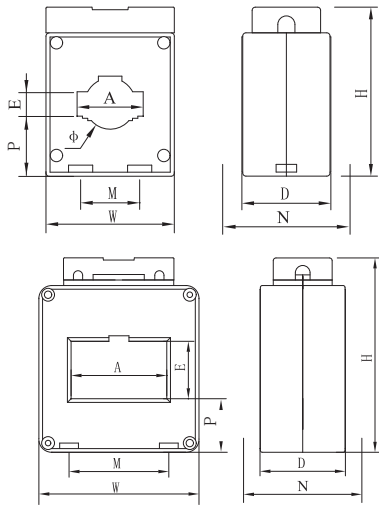


Specification

- Standard: GB/T 20840.2
- Primary current: 15-3000A
Secondary current: 5A, 1A
- Rated voltage: \leq AC 0.66kV
- Rated frequency: 50-60Hz
- Uimp: 3000V 1min 50Hz
- Altitude: \leq 3000m
- Environment: -30°C-+60°C, No rain and snow directly attack, no serious pollution and violent vibration places
- Insulation class: E

Ordering

- Please note model, specification, current ratio, accuracy and secondary rated load or capacity, etc.;
- Please note installation method;
- If you need to use under special conditions, please contact us for customization.

Size


Unit(mm)

Model	Outline size				Hole size			Installstion size		Installation method
	W	H	D	P	A	E	Φ	M	N	
30 I -S	75	97	44	36.2	32	11	23	44	64	A
30 I -I	60	79	41	28	31	11	23	28	64	A
40 I	75	98	45	35.7	41	11	31	42	64/58	A / D
40 I -S	85	112	55	40	40	10		66	72	A
60 I	100	128	45	45.7	61	21	46	42	64/58	A / D
80 I	117	148	44	60.2	82	11	50	60	64/58	A / D
100 I	145	152	44	62.7	102	11	62	80	64/58	A / D
40 II	76	103	46	27.7	42	32		45	64/58	A / D
50 II	87	106	46	29.2	52	31		55	64/58	A / D
60 II	98	111	46	31.7	62	31		42	64/58	A / D
80 II	119	118	45	35.2	81	32		60	58/58	D / F
100 II	141	123	50	37.95	102	32		75	58/73	D / F

CJH(BH)-0.66 measured (S type) main technology specification

Model	30I-S	30I-I	40I	40I-S	60I	80I	100I	
Specification / number	30×10/1	30×10/1	40×10/1	40×10/1	60×10/1	80×10/1	10×10/1	
Hole size	Φ21	Φ23	Φ31	Φ31	Φ46	Φ50	Φ62	
Accuracy class	0.2S	0.5S	0.2S	0.5S	0.2S	0.5S	0.2S	0.5S
Current ratio (A)	Turns	Rated capacity (VA)						
100/5	1	2.5	2.5					
150/5	1	2.5	2.5		2.5	2.5		
200/5	1	2.5	2.5	2.5	2.5			
250/5	1	2.5	2.5	2.5	2.5			
300/5	1	2.5	2.5	2.5	2.5	2.5	2.5	
400/5	1	2.5	2.5	2.5	2.5	2.5	2.5	
500/5	1			2.5	2.5	2.5	2.5	
600/5	1			2.5	2.5	2.5	2.5	
750/5	1			2.5	2.5	2.5	2.5	
800/5	1			2.5	2.5	2.5	2.5	
1000/5	1					10	15	
1200/5	1					10	20	
1500/5	1					10	20	
1600/5	1						10	
2000/5	1						20	
2500/5	1							
3000/5	1							

CJH (BH) -0. 66 measured (S type) main technology specification													
Model		30I-S	30I-I	40I		40I-S		60I		80I		100I	
Specification / number		30×10/1	30×10/1	40×10/1		40×10/1		60×10/1		80×10/1		10×10/1	
Hole size		Φ21	Φ23	Φ31		Φ31		Φ46		Φ50		Φ62	
Accuracy class		0.2S	0.5S	0.2S	0.5S	0.2S	0.5S	0.2S	0.5S	0.2S	0.5S	0.2S	0.5S
Current ratio (A) Turns		Rated power (Ω)											
100/1	2	0.1	0.1										
150/1	1	0.1	0.1			0.1	0.1						
200/1	1	0.1	0.1	0.1	0.1								
250/1	1	0.1	0.1	0.1	0.1								
300/1	1	0.1	0.1	0.1	0.1			0.1	0.1				
400/1	1	0.1	0.1	0.1	0.1			0.1	0.1				
500/1	1			2.5	2.5			2.5	2.5		2.5		
600/1	1			2.5	2.5			2.5	2.5	2.5	2.5		
750/1	1			2.5	2.5			2.5	2.5	2.5	2.5	2.5	2.5
800/1	1			2.5	2.5			2.5	2.5	2.5	2.5	2.5	2.5
1000/1	1							5	10	5	10	5	10
1200/1	1							15	20	15	20	15	20
1500/1	1							15	20	15	20	15	20
1600/1	1									15	20	15	20
2000/1	1									15	20	15	20
2500/1	1											15	20
3000/1	1											15	20

CJH (BH) -0. 66 measured (S type) main technology specification											
Model		40II		50II		60II		80II		100II	
Specification / number		40×30/1-2		50×10/1-2		60×10/1-2		80×10/1-2		100×10/1-2	
Hole size		42×32		52×31		62×31		82×32		102×32	
Accuracy class		0. 2S	0. 5S	0. 2S	0. 5S	0. 2S	0. 5S	0. 2S	0. 5S	0. 2S	0. 5S
Current ratio (A)	Turns	Rated capacity (VA)									
		150/5	2	2. 5	2. 5						
200/5	1	2. 5	2. 5								
250/5	1	2. 5	2. 5								
300/5	1	2. 5	2. 5	2. 5	2. 5						
400/5	1	2. 5	2. 5	2. 5	2. 5	2. 5	2. 5				
500/5	1	2. 5	2. 5	2. 5	2. 5	2. 5	2. 5	2. 5	2. 5		
600/5	1	2. 5	2. 5	2. 5	2. 5	2. 5	2. 5	2. 5	2. 5	2. 5	2. 5
750/5	1	2. 5	2. 5	2. 5	2. 5	2. 5	2. 5	2. 5	2. 5	2. 5	2. 5
800/5	1	2. 5	2. 5	2. 5	2. 5	2. 5	2. 5	2. 5	2. 5	2. 5	2. 5
1000/5	1			10	15	10	15	10	15	10	15
1200/5	1			10	20	10	20	15	20	15	20
1500/5	1			10	20	20	20	15	20	15	20
1600/5	1			10	20	20	20	15	20	15	20
2000/5	1					20	40	15	40	15	40
2500/5	1							20	40	20	40
3000/5	1									20	40
4000/5	1									20	40
Rated power (Ω)											
200/1	1	0. 1	0. 1								
250/1	1	0. 1	0. 1								
300/1	1	0. 1	0. 1	0. 1	0. 1						
400/1	1	2. 5	2. 5	2. 5	2. 5	2. 5	2. 5				
500/1	1	2. 5	2. 5	2. 5	2. 5	2. 5	2. 5			2. 5	2. 5
600/1	1	2. 5	2. 5	2. 5	2. 5	2. 5	2. 5		2. 5	2. 5	2. 5
750/1	1	2. 5	2. 5	2. 5	2. 5	2. 5	2. 5		2. 5	2. 5	2. 5
800/1	1	2. 5	2. 5	2. 5	2. 5	2. 5	2. 5		2. 5	2. 5	2. 5
1000/1	1			5	10	5	10	5	10	5	10
1200/1	1			15	20	15	20	15	20	15	20
1500/1	1			15	20	15	20	15	20	15	20
1600/1	1			15	20	15	20	15	20	15	20
2000/1	1					15	20	15	20	15	20
2500/1	1							15	20	15	20
3000/1	1									15	20
4000/1	1									15	20

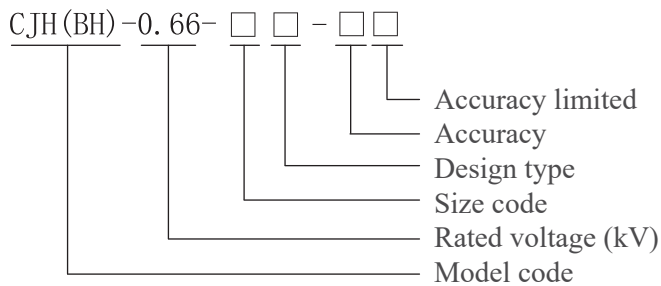
CJH(BH)-0.66 protective (P type) current transformer

Characteristic

P-type current transformer, with round pass (through cable) and square pass (through bus), suitable for protection of relay, is when the primary current reaches the rated current multiple times (up to 20 times) also maintain its accuracy as the main requirements of protection. Used in low voltage distribution protection system.



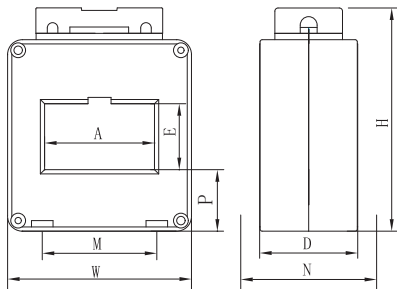
Model



Specification

- Standard: GB/T 20840.2
- Primary current: 100-6300A
Secondary current: 5A, 1A
- Rated voltage: ≤AC 0.66kV
- Rated frequency: 50-60Hz
- U_{imp}: 3000V 1min 50Hz
- Altitude: ≤3000m
- Environment: -30°C+60°C, No rain and snow directly attack, no serious pollution and violent vibration places
- Insulation class: E

Size



Unit (mm)

Model	Outline size				Hole size		Installstion size		Installation method
	W	H	D	P	A	E	M	N	
50II-P	120	152	75	52	52	32	75	83	P
60×50II-P	130	181	75	55.5	63	54	82	83	P
80×50II-P	165	186	75	57.7	83	54	117	83	P
100×50II-P	190	186	75	56.5	103	56	141	83	P
125×80II-P	220	215	90	59.2	130	81	170	109	P
220×50II-P	280	184	60	56	225	56	233	83	P
170×100II-P	255	216	60	47	167	106	207	83	P

Ordering

- Please note model, specification, current ratio, accuracy and secondary rated load or capacity, etc.;
- Please note installation method;
- If you need to use under special conditions, please contact us for customization.

CJH(BH)-0.66 protective (P type) main technology specification																						
Model		50Ⅱ-P			60×50Ⅱ-P			80×50Ⅱ-P			100×50Ⅱ-P			125×80Ⅱ-P			220×50Ⅱ-P			170×100Ⅱ-P		
Specification/numbers		50×10 1-2			60×10 1-3			80×10 1-3			100×10 1-3			125×10/120×10 2-4			220×10 1-3			170×10 1 100×10 3-6		
Accuracy class (10P□/5P□)		10	15	20	10	15	20	10	15	20	10	15	20	10	15	20	10	15	20	10	15	20
Rated current ratio		Rated capacity (VA)																				
100/5	100/1	2.5	2.5		2.5	2.5																
150/5	150/1	2.5	2.5	2.5	2.5	2.5	2.5															
200/5	200/1	2.5	2.5	2.5	2.5	2.5	2.5															
250/5	250/1	2.5	2.5	2.5	2.5	2.5	2.5															
300/5	300/1	5	5	2.5	5	5	2.5	5	5	2.5				5	2.5	2.5						
400/5	400/1	7.5	5	5	7.5	5	5	7.5	5	5	5	5	5	5	5	5						
500/5	500/1	7.5	5	5	7.5	5	5	10	5	5	10	5	5	10	5	5	10	5	5	10	5	5
600/5	600/1	10	7.5	5	10	7.5	5	10	7.5	5	10	10	5	10	10	7.5	10	10	7.5	10	10	7.5
750/5	750/1	15	10	7.5	15	10	7.5	10	10	7.5	10	10	7.5	10	10	7.5	10	7.5	7.5	10	7.5	7.5
800/5	800/1	15	10	7.5	15	10	7.5	15	10	7.5	15	7.5	7.5	10	7.5	5	10	7.5	7.5	10	7.5	7.5
1000/5	1000/1	15	10	10	15	10	10	15	10	10	15	10	7.5	15	10	7.5	15	10	7.5	15	10	7.5
1200/5	1200/1	20	15	10	20	15	10	20	15	10	20	15	10	20	15	10	20	15	10	20	15	10
1250/5	1250/1	20	15	10	20	15	10	20	15	10	20	15	10	20	15	10	20	15	10	20	15	10
1500/5	1500/1	20	15	10	20	15	10	20	15	10	20	15	10	20	15	10	20	15	10	20	15	10
2000/5	2000/1							30	20	15	30	20	15	30	20	15	30	20	15	30	20	15
2500/5	2500/1							30	20	15	30	20	15	30	20	15	30	20	15	30	20	15
3000/5	3000/1							30	20	15	30	20	15	30	20	15	30	20	15	30	20	15
4000/5	4000/1										30	20	15	30	20	15	30	20	15	30	20	15
5000/5	5000/1													30	20	15	30	20	15	30	20	15
6000/5	6000/1																30	20	15	30	20	15
6300/5	6300/1																30	20	15	30	20	15

Note: Please communicate the specification of red parameters when ordering, so that it can be customized according to special requirements.

Ordering



Fig A Straight sheet fixed



Fig B Bending sheet fixed



Fig C Side sheet fixed

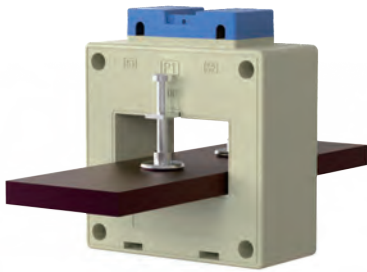


Fig D Single compression plate fixed (straight)

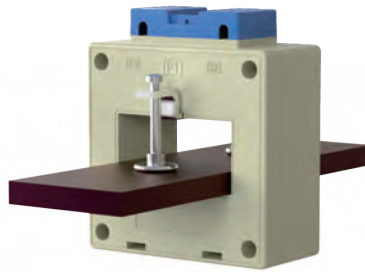


Fig E Single compression plate fixed (bending)

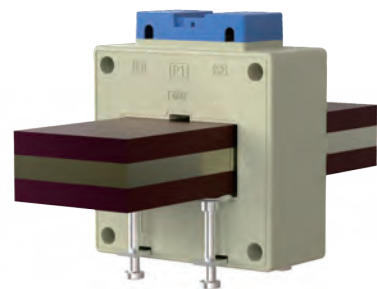


Fig F Double compression plate fixed



Fig G Compression plate fixed



Fig H Busbar fixed



Fig U Guide rail fixed

Main products:

- ◆AD11 series signal lamp, tower lamp
- ◆CJK22 series signal lamp, button
- ◆UK series terminal connector
- ◆CJ series relay
- ◆Construction machinery lamp, switch, socket
- ◆PCM series integrated module
- ◆Metal signal lamp, button
- ◆LA38 series button
- ◆LW38 series change-over switch
- ◆CJH(BH) series current transformer
- ◆ANH series button box and case

Welcome to call us for this sample manual or visit our website for more inquiry



江阴长江电器股份有限公司
JIANGYIN CHANGJIANG ELECTRIC APPLIANCE CO., LTD.

地址：江苏省江阴市澄江东路99号
Add: No.99 Chengjiang R.(E), Jiangyin, Jiangsu, China
电话 (Tel) : 0510-86858743/0510-86852075
传真 (Fax) : 0510-86851360/0510-86853798
技术咨询: 0510-86851360/0510-86197012
Http://www.cjel.com E-mail: ad11@cjel.com